



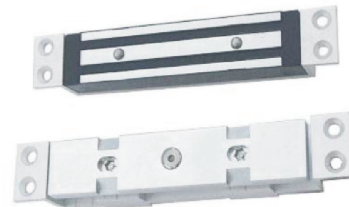
**74-AM300 / 74-M400**



**74-S300 / 74-S400 / 74-S500**



**74-E500**



**74-SL200**



**74-SL750**

Magnet Part No	Description*
74-M300	300Kg holding force 12/24Vdc
74-M300M	300Kg holding force 12/24Vdc monitored
74-M400	400Kg holding force 12/24Vdc
74-M400M	400Kg holding force 12/24Vdc monitored
74-S300	300Kg holding force 12/24Vdc
74-S300M	300Kg holding force 12/24Vdc monitored
74-S400	400Kg holding force 12/24Vdc
74-S400M	400Kg holding force 12/24Vdc monitored
74-S500	500Kg holding force 12/24Vdc
74-S500M	500Kg holding force 12/24Vdc monitored
74-E500	500Kg holding force 12/24Vdc externally rated stainless steel housing
74-SL200	800Kg holding force shearlock 12/24Vdc
74-SL750	1225kg holding force shearlock 12/24Vdc

\* holding forces stated maximum holding forces and are not guaranteed. Magnets will hold up to this force

The **GEOFIRE** range of security bar magnets have been designed with cost effective access control in mind.

They are manufactured in a brushed aluminium finish, (except 74-E500 which is supplied in an externally rated stainless steel body), as standard.

These magnets can be fitted, with the use of separate accessories, to either inward or outward opening doors.

Holding force vary from 300Kg to 500Kg for the bar magnets and 800Kg to 1200Kg for the shearlocks.

Each magnet in the **GEOFIRE** range has been manufactured as a 12/24Vdc dual voltage unit and have voltage spike suppression as standard.

**Dimensional Data L x H x D (mm) & magnet current draw**

Magnet Part No.	Magnet Body	Keeper Plate	Current Draw
74-M300	228 x 38 x 27	185 x 38 x 12.5	500mA @ 12V, 200mA @ 24V
74-M400	229 x 44 x 30	185 x 45 x 12.5	630mA @ 12V, 315mA @ 24V
74-S300	250 x 42 x 26	185 x 38 x 12.5	500mA @ 12V, 250mA @ 24V
74-S400	253 x 49 x 29	185 x 45 x 12.5	630mA @ 12V, 315mA @ 24V
74-S500	266 x 73 x 40	185 x 61 x 16	500mA @ 12V, 250mA @ 24V
74-E500	203 x 63 x 40	185 x 61 x 16	530mA @ 12V, 265mA @ 24V
74-SL300	170 x 25 x 24	170 x 25 x 29	1.2A pull in, 200mA holding @ 12V
			1.0A pull in, 180mA holding @ 24V
74-SL750	268 x 35 x 35	268 x 30 x 35	1.8A pull in, 500mA holding @ 12V
			1.0A pull in, 350mA holding @ 24V

All **GEOFIRE** bar magnets are CE approved